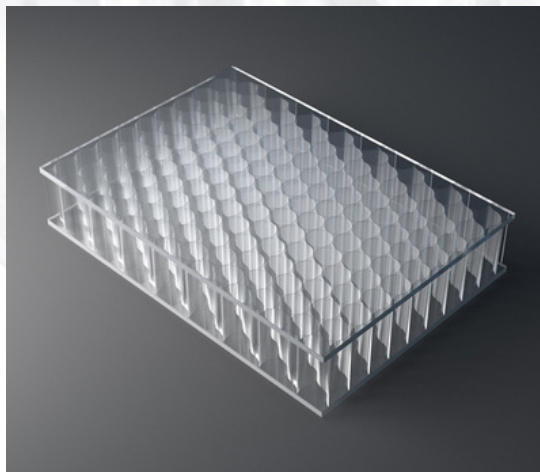




## PRODUCT DESCRIPTION

**AIR-board® ECO PC clear** honeycomb panels are made with three polycarbonate (PC) core options and clear PC facing sheets with sustainable raw material content. PC ECO is the facing layers and has a bio-circular material content and low CO2 footprint. Normally manufactured using fossil fuels, these components have been replaced by bio-based renewable raw materials. The attributed share is up to 83% of the total material content. In addition, **AIR-board ECO PC clear** is 100% recyclable. These lightweight panels combined with different core options can be used in many different ways in interior architecture to suit the needs of your design.



## COLOR

Clear, custom color options are available.

## CORE

AIR-board® ECO PC cell diameter 7 mm/0.27"

big AIR-board® ECO PC cell diameter 12 mm/0.47"

chaos AIR-board® ECO PC cell diameter 4/7/12 mm – 0.15" / 0.27" / 0.47"

## DIMENSIONS

FORMAT	LENGTH [MM/INCHES]	WIDTH [MM/INCHES]	**THICKNESS [MM/INCHES]
Standard	3,020/118.8	1,220/48	19/0.75
<b>Special Dimensions*</b>			
AIR-board® ECO PC clear big AIR-board® ECO PC clear chaos AIR-board® ECO PC clear	max. 3,500/137 max. 3,020/118.8 max. 3,020/118.8	max. 1,500/59 max. 1,300/51 max. 1,300/51	max. 30/1.18 max. 30/1.18 max. 30/1.18
<b>Production/Cutting Tolerance</b>	2/-2 to 0.08/-0.08	1/-2 to 0.04/-0.08	0/-1 to 0/-0.04

\*On request – minimum orders apply

\*\* Thickness of 12mm/0.47", 16mm/0.63" and 30mm/1.18" are also available, minimums or extended lead times may apply

## PHYSICAL PROPERTIES

COEFFICIENT OF THERMAL EXPANSION ACC. TO DIN 537522-A [1/K]	SERVICE TEMPERATURE [C/F]	FACING SHEETS	* ESTIMATED LIGHT TRANSMISSION [%]
6 x 10 <sup>-5</sup>	-30 to +80 / -22 to 176	2mm PC clear	63%

\*estimated using standard thickness of 19 mm / 3/4"





## MECHANICAL PROPERTIES

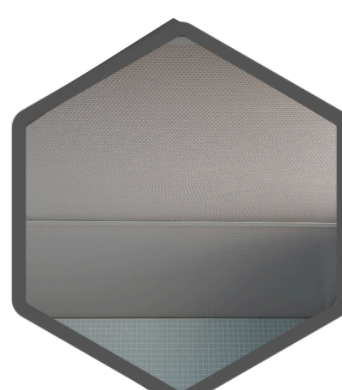
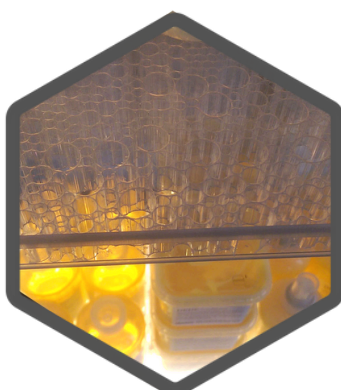
THICKNESS [MM/INCHES]	WEIGHT PER UNIT AREA [KG/M <sup>2</sup> /LBS/SQFT]	THERMAL INSULATION U-VALUE [W/M <sup>2</sup> K]	SOUND INSULATION RW [DB]	*MODULUS OF ELASTICITY [N/MM <sup>2</sup> ]
19/0.75	5.9/1.20	2.4	21	532
30/1.18	6.6/1.35	1.7	23	1,688

\*per 1m panel width

## FIRE CLASSIFICATION

FIRE CLASSIFICATION	ASTM D-2843 SMOKE DENSITY [%]	ASTM D-635 BURNING RATE [INCHES]	ASTM D-1929 SELF IGNITION TEMP. [F]
C1/CC1	36.50%	0.47"	1,095

## POPULAR APPLICATIONS



## INFINITE POSSIBILITIES

Moxie Surfaces is the US Distributor of Design Composite. We specialize in creative finishing materials with infinite possibilities. Our unique architectural elements stimulate the senses and help create beautiful environments for learning, living, and enjoying our lives.

Our products provide a variety of benefits including sound absorption, light transmission and thermal insulation, while offering unlimited applications for indoor or outdoor design.

## NOTES

*All information and specifications contained herein are based on the most up-to-date information available and to the best of our knowledge. These specifications are subject to change at any time. A legally binding assurance of certain properties or the suitability of an individual type for a specific field or application cannot be inferred from these specifications. All information is provided without any obligation. No legal liability can or will be assumed.*