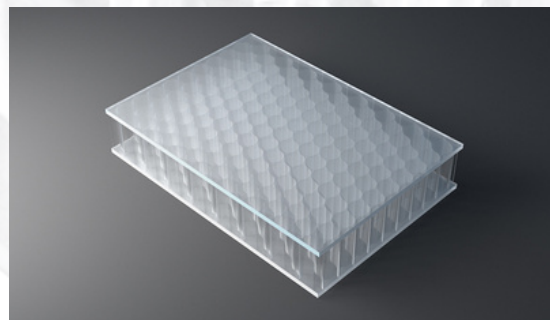




PRODUCT DESCRIPTION

AIR-board[®] ECO satin panels are made with three polycarbonate (PC) core options and colored, satin-textured PMMA facing sheets. Facings are made with 100% recycled PMMA (R-MMA) and has the same excellent properties of standard PMMA made with a synthetic monomer and is 100% recyclable. These lightweight panels combined with different core options can be used in many different ways in interior architecture to suit the needs of your design.



COLOR

Standard: Clear Haze, Orange Zest, Opal White, Blue Spark, Gray Shadow

Premium: Red Hot, Yellow Glow, Blue Lagoon, Green Ice

In addition to the standard and premium colors, we offer digital printing for indoor use: AIR-board[®] ECO satin printed (*)

* Requires RAL color number. RAL colors are converted to translucent colors and will vary from the actual RAL color. There is no MOQ, a set-up fee may apply.

CORE

AIR-board[®] ECO satin cell diameter 7 mm/0.27"

big AIR-board[®] ECO satin cell diameter 12 mm/0.47"

chaos AIR-board[®] ECO satin cell diameter 4/7/12 mm – 0.15" / 0.27" / 0.47"

DIMENSIONS

FORMAT	LENGTH [MM/INCHES]	WIDTH [MM/INCHES]	**THICKNESS [MM/INCHES]
Standard	3,020/118.8	1,000/39.3	19/0.75
Special Dimensions*			
AIR-board [®] ECO satin big AIR-board [®] ECO satin chaos AIR-board [®] ECO satin	max. 3,020/118.8 max. 3,020/118.8 max. 3,020/118.8	max. 1,500/59 max. 1,300/51 max. 1,300/51	max. 30/1.18 max. 30/1.18 max. 30/1.18
Production/Cutting Tolerance	2/-2 to 0.08/-0.08	1/-2 to 0.04/-0.08	0/-1 to 0/-0.04

*On request – minimum orders apply

** Thickness of 12mm/0.47", 16mm/0.63" and 30mm/1.18" are also available, minimums or extended lead times may apply

PHYSICAL PROPERTIES

COEFFICIENT OF THERMAL EXPANSION ACC. TO DIN 537522-A [1/K]	SERVICE TEMPERATURE [C/F]	FACING SHEETS	* ESTIMATED LIGHT TRANSMISSION [%]
7.5 x 10 ⁻⁵	-30 to +80 / -22 to 176	3mm PMMA	23% - 58%

*estimated using standard thickness of 19 mm / 3/4" - clear haze - 58%, opal white - 27%, blue spark - 25%, orange zest - 27%, grey shadow - 23%



MECHANICAL PROPERTIES

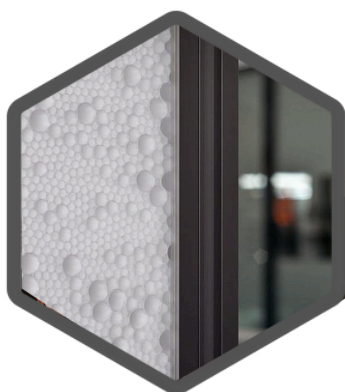
THICKNESS [MM/INCHES]	WEIGHT PER UNIT AREA [KG/M ² /LBS/SQFT]	THERMAL INSULATION U-VALUE [W/M ² K]	SOUND INSULATION RW [DB]	*MODULUS OF ELASTICITY [N/MM ²]
19/0.75	8.0/1.80	2.5	24	714
30/1.18	8.8/1.80	1.8	26	1,710

*per 1m panel width

FIRE CLASSIFICATION

FIRE CLASSIFICATION	ASTM D-2843 SMOKE DENSITY [%]	ASTM D-635 BURNING RATE [INCHES]	ASTM D-1929 SELF IGNITION TEMP. [F]
C2/CC2	8.2%	1.14"	853

POPULAR APPLICATIONS



INFINITE POSSIBILITIES

Moxie Surfaces is the US Distributor of Design Composite. We specialize in creative finishing materials with infinite possibilities. Our unique architectural elements stimulate the senses and help create beautiful environments for learning, living, and enjoying our lives.

Our products provide a variety of benefits including sound absorption, light transmission and thermal insulation, while offering unlimited applications for indoor or outdoor design.

NOTES

All information and specifications contained herein are based on the most up-to-date information available and to the best of our knowledge. These specifications are subject to change at any time. A legally binding assurance of certain properties or the suitability of an individual type for a specific field or application cannot be inferred from these specifications. All information is provided without any obligation. No legal liability can or will be assumed.