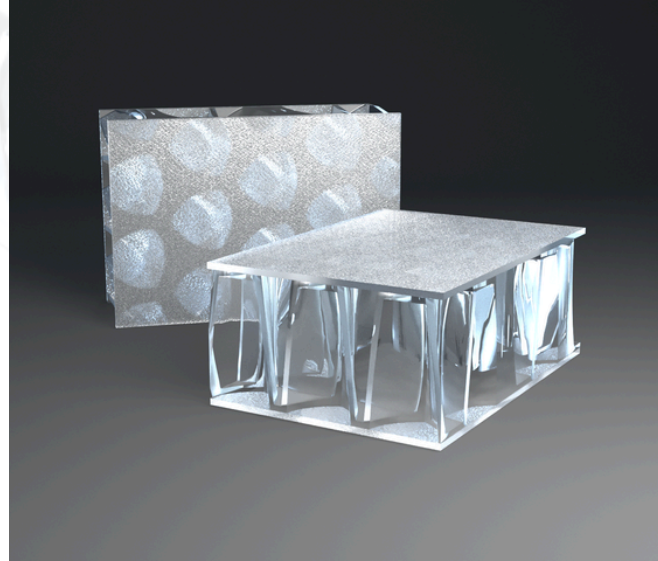




## PRODUCT DESCRIPTION

**clear-PEP® ECO PC stage** honeycomb panels are made with our patented polycarbonate TRlcore, made with our specially designed core expander. The innovative characteristics of the special cell structure give the lightweight panels unique visual depth but also high rigidity. **PC ECO** is the facing layers and has a bio-circular material content and low CO2 footprint. Normally manufactured using fossil fuels, these components have been replaced by bio-based renewable raw materials.



The attributed share is up to 83% of the total material content. In addition, **clear-PEP® ECO PC stage** is 100% recyclable. These lightweight panels combined with different options can be used in many different ways in interior and exterior architecture to suit the needs of your design.

## COLOR

**Standard:** Transparent structured polycarbonate with sustainable raw material content

In addition to the standard color, we offer digital printing for indoor use: clear-PEP® ECO color printed (\*) and Special UV Resistant coating for outdoor use: clear-PEP® ECO PC stage coated

*Requires RAL color number. RAL colors are converted to translucent colors and will vary from the actual RAL color. There is no MOQ, a set-up fee may apply.*

## DIMENSIONS

| FORMAT                       | LENGTH [MM/INCHES] | WIDTH [MM/INCHES]  | THICKNESS [MM/INCHES] |
|------------------------------|--------------------|--------------------|-----------------------|
| Standard                     | 2,000/78.75        | 1,000/39.3         | 40/1.57               |
| Special Dimensions*/**       | max. 3,000/118.11  | max. 1,220/48.03   | max. 40/1.57          |
| Production/Cutting Tolerance | 2/-2 to 0.08/-0.08 | 1/-2 to 0.04/-0.08 | 0/-1 to 0/-0.04       |

\*on request – minimum orders apply

## PHYSICAL PROPERTIES

| COEFFICIENT OF THERMAL EXPANSION ACC. TO DIN 537522-A [1/K] | SERVICE TEMPERATURE [C/F] | G VALUE (TOTAL ENERGY TRANSMISSION VALUE) BASED ON SOLAR ANGLE | FACING SHEETS      | * ESTIMATED LIGHT TRANSMISSION [%] |
|---|---------------------------|--|--------------------|------------------------------------|
| 6.5 x 10 <sup>-5</sup>                                      | -30 to +80 / -22 to 176   | 0.62 (0°), 0.58 (30°), 0.55 (45°), 0.43 (60°)                  | 2mm UV PC textured | 47%                                |

\*estimated using standard thickness of 40 mm / 1.57"



## MECHANICAL PROPERTIES

| THICKNESS [MM/INCHES] | WEIGHT PER UNIT AREA [KG/M <sup>2</sup> /LBS/SQFT] | THERMAL INSULATION U-VALUE [W/M <sup>2</sup> K] | SOUND INSULATION RW [DB] | *MODULUS OF ELASTICITY [N/MM <sup>2</sup> ] |
|-----------------------|--|---|--------------------------|---|
| 30/1.18               | 9.7/1.98   | 2.4   | 25                       | 1,688                                       |
| 40/1.57               | 9.7/1.98   | 2.1   | 25                       | 2,933                                       |

\*per 1m panel width

## FIRE CLASSIFICATION

| FIRE CLASSIFICATION | ASTM D-2843 SMOKE DENSITY [%] | ASTM D-635 BURNING RATE [INCHES] | ASTM D-1929 SELF IGNITION TEMP. [F] | ASTM E648-17/NFPA253 WATTS/CM <sup>2</sup> |
|---------------------|-------------------------------|----------------------------------|-------------------------------------|--|
| C1/CC1              | 53.30%                        | <1"                              | 1,093                               | >1.10                                      |

## POPULAR APPLICATIONS



## INFINITE POSSIBILITIES

Moxie Surfaces is the US Distributor of Design Composite. We specialize in creative finishing materials with infinite possibilities. Our unique architectural elements stimulate the senses and help create beautiful environments for learning, living, and enjoying our lives.

Our products provide a variety of benefits including sound absorption, light transmission and thermal insulation, while offering unlimited applications for indoor or outdoor design.

## NOTES

*All information and specifications contained herein are based on the most up-to-date information available and to the best of our knowledge. These specifications are subject to change at any time. A legally binding assurance of certain properties or the suitability of an individual type for a specific field or application cannot be inferred from these specifications. All information is provided without any obligation. No legal liability can or will be assumed.*