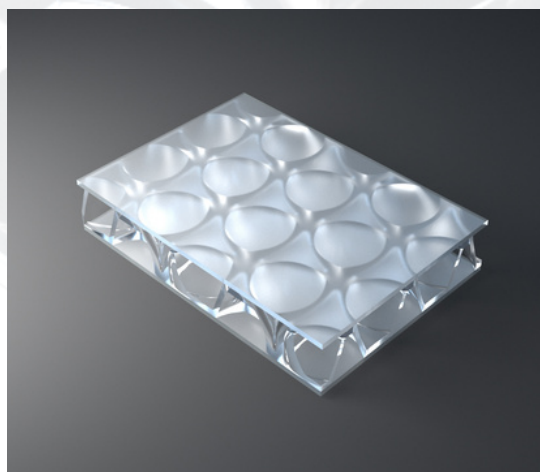




## PRODUCT DESCRIPTION

clear-PEP® ECO satin panels are made with our patented polycarbonate TRlcore, made with our specially designed core expander and colored, satin textured PMMA facing sheets. Facings are made with 100% recycled PMMA (R-MMA) and has the same excellent properties of standard PMMA made with a synthetic monomer and is 100% recyclable. These lightweight panels can be used in many different ways in interior architecture to suit the needs of your design.



## COLORS

**Standard:** Clear Haze, Orange Zest, Opal White, Blue Spark, Gray Shadow

**Premium:** Red Hot, Yellow Glow, Blue Lagoon, Green Ice

In addition to the standard and premium colors, we offer digital printing for indoor use: clear-PEP® ECO satin printed (\*)

\* Requires RAL color number. RAL colors are converted to translucent colors and will vary from the actual RAL color. There is no MOQ, a set-up fee may apply.

## DIMENSIONS

FORMAT	LENGTH [MM/INCHES]	WIDTH [MM/INCHES]	THICKNESS [MM/INCHES]
Standard	3,020/118.8	1,000/39.3	19/0.75
Special Dimensions*/**	max. 3,020/118.8	max. 2,020/79.5	max. 40/1.57
Production/Cutting Tolerance	2/-2 to 0.08/-0.08	1/-2 to 0.04/-0.08	2/-2 / 0.08/-0.08

\*on request – minimum orders apply

\*\*all panels over 3,020 x 1,220 mm require a core joint

## PHYSICAL PROPERTIES

COLOR	COEFFICIENT OF THERMAL EXPANSION ACC. TO DIN 537522-A [1/K]	SERVICE TEMPERATURE [C/F]	FACING SHEETS	* ESTIMATED LIGHT TRANSMISSION [%]
satin clear	7 x 10 <sup>-5</sup>	-30 to +80 / -22 to 176	3mm PMMA	48%
satin opal	7 x 10 <sup>-5</sup>	-30 to +80 / -22 to 176	3mm PMMA	17%
satin electric blue	7 x 10 <sup>-5</sup>	-30 to +80 / -22 to 176	3mm PMMA	15%
satin orange	7 x 10 <sup>-5</sup>	-30 to +80 / -22 to 176	3mm PMMA	17%
satin gray	7 x 10 <sup>-5</sup>	-30 to +80 / -22 to 176	3mm PMMA	13%

\*estimated using standard thickness of 19 mm / 3/4"



## MECHANICAL PROPERTIES

THICKNESS [MM/INCHES]	WEIGHT PER UNIT AREA [KG/M <sup>2</sup> /LBS/SQFT]	THERMAL INSULATION U-VALUE [W/M <sup>2</sup> K]	SOUND INSULATION RW [DB]	*MODULUS OF ELASTICITY [N/MM <sup>2</sup> ]
19/0.75	10.8/2.21	2.8	26	829
30/1.18	12/2.46	2.4	27	1,800
40/1.57	12/2.46	2.1	27	3,200

\*per 1m panel width

## FIRE CLASSIFICATION

FIRE CLASSIFICATION	ASTM D-2843 SMOKE DENSITY [%]	ASTM D-635 BURNING RATE [INCHES]	ASTM D-1929 SELF IGNITION TEMP. [F]
C2/CC2	8.2%	1.14"	853

## POPULAR APPLICATIONS



## INFINITE POSSIBILITIES

Moxie Surfaces is the US Distributor of Design Composite. We specialize in creative finishing materials with infinite possibilities. Our unique architectural elements stimulate the senses and help create beautiful environments for learning, living, and enjoying our lives.

Our products provide a variety of benefits including sound absorption, light transmission and thermal insulation, while offering unlimited applications for indoor or outdoor design.

## NOTES

*All information and specifications contained herein are based on the most up-to-date information available and to the best of our knowledge. These specifications are subject to change at any time. A legally binding assurance of certain properties or the suitability of an individual type for a specific field or application cannot be inferred from these specifications. All information is provided without any obligation. No legal liability can or will be assumed.*